



(주) 강 텍  
회 사 소 개 서  
(KANGTEC co.Ltd Introduce)

# INTRODUCTION



경기도 부천시 부천로 419번길 98 오승빌딩3층  
T : 032-675-8480 F : 032-675-8483  
kangtec@kangtec.co.kr

저희 (주)강텍은 2014년 (주)정호시스템 으로 설립하여 운영하는 중 2017년에 지금의 상호로 변경  
운영하기 시작하였습니다.

2000년부터 영상장비분야에 임하면서 얻은 노하우를 토대로 고객의 만족도를 높이기 위해 최대한  
노력하고 있습니다. 그리고 KBS,MBC,SBS,JTBC 등 방송 협력사로 등록되어 있으며 및 정부행사,  
대형 이벤트, 기업행사등 ATL, BTL 분야에 많은 경험이 있습니다. 또한 MICE 산업분야와 공연(콘  
서트 / 뮤지컬 등) 또한 많은 경험이 있습니다.

현재 영상관련 시스템은 빠르게 변화하는 시대와 마찬가지로 급속하게 변화하고 있습니다. 저희  
(주)강텍 또한 시대의 변화와 요구에 맞게 최신 장비의 구매 및 교육훈련을 통해 인재를 양성하고  
있습니다.

고객의 다양한 요구와 필요로 하는 시스템을 제공하고 최선의 노력을 다하고 있습니다.

기존에 정형화된 시스템이 아닌 보다 크리에이티브한 시스템과 안정된 운영, 최고의 테크니션을  
제공하고자 앞으로도 최선을 다 할 것을 약속드립니다.

(주) 강텍 대표 강 승 완

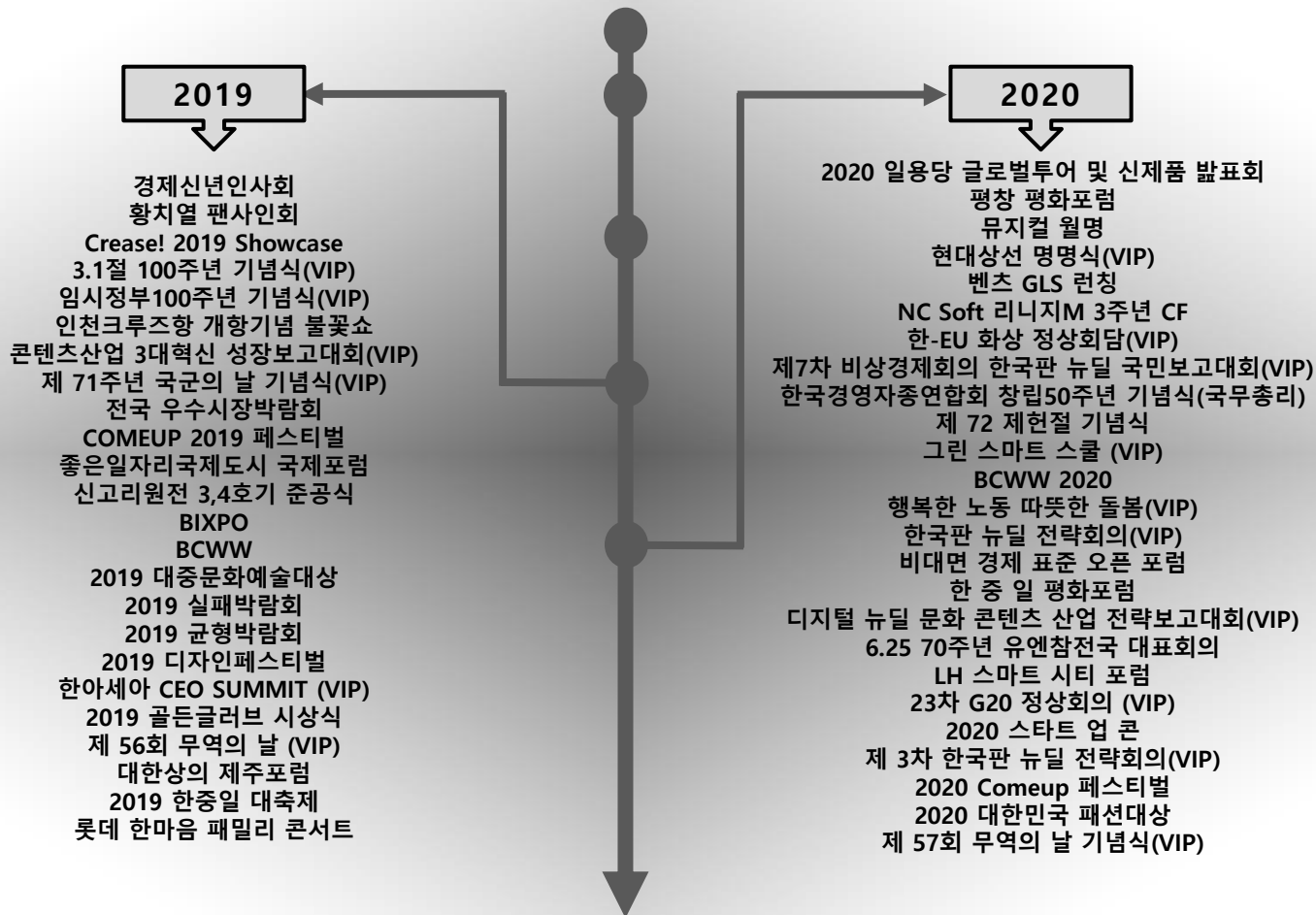




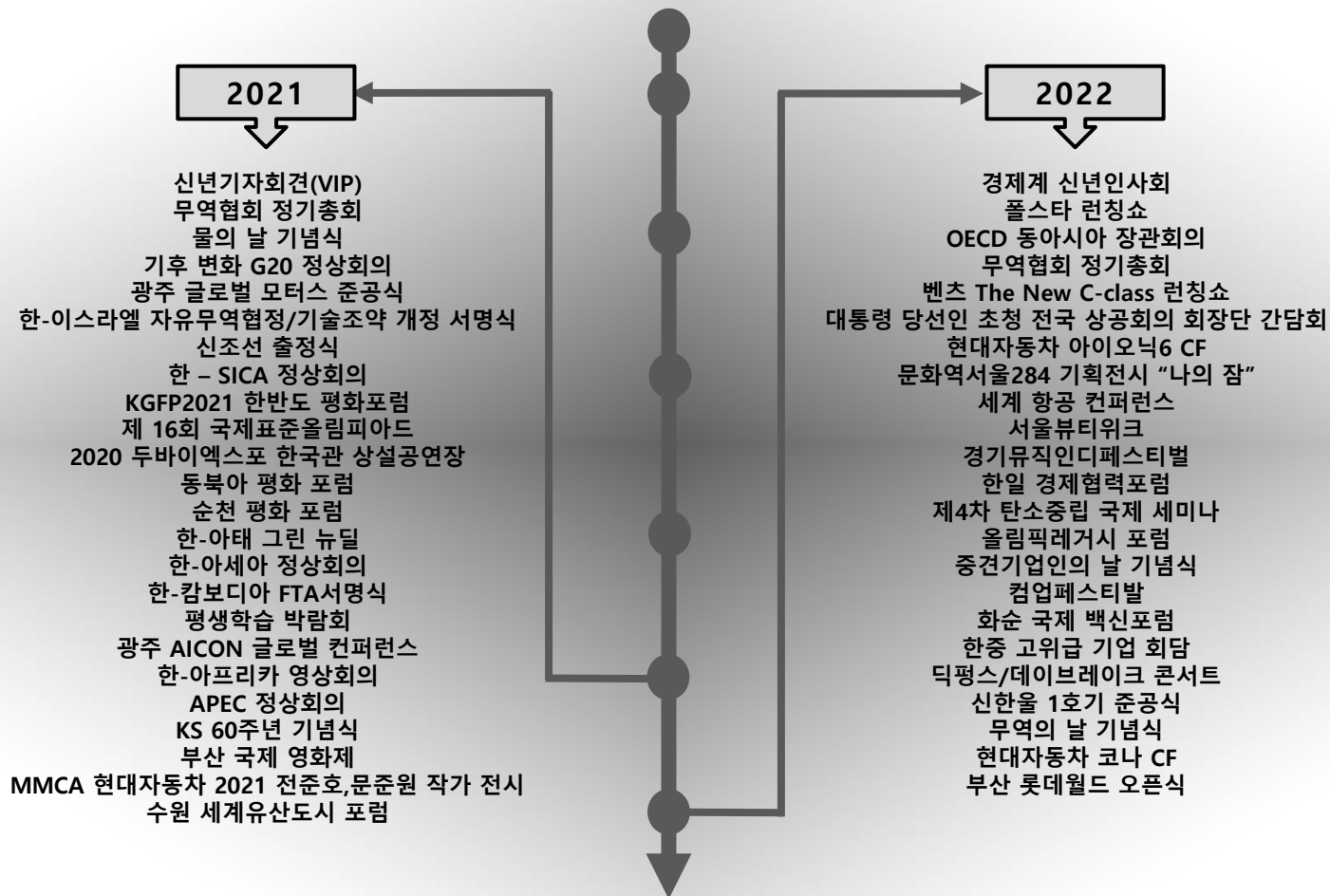
# PERFORMANCE HISTORY



# PERFORMANCE HISTORY

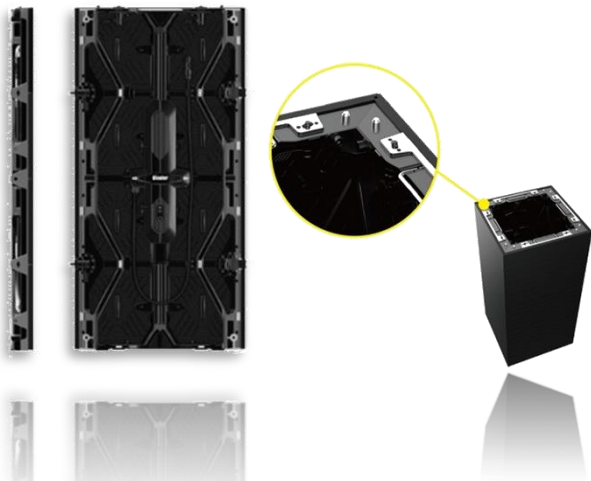


# PERFORMANCE HISTORY



# PRODUCT # LED GX-2

최고화질 LED Panel  
전시 / Conference 적합  
Indoor

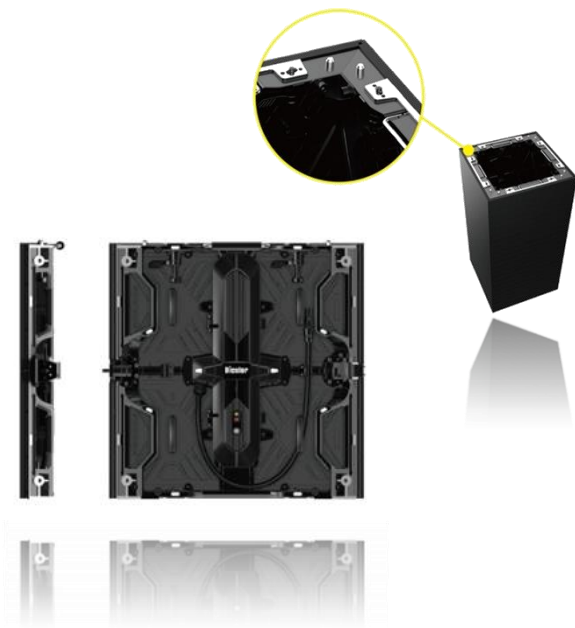


## SPECIFICATIONS

PARAMETER	VALUE	UNIT
Frame Size	500 x 1000 x 65	mm,W x H x D
Pixel Pitch	2.5	mm
Panel Resolution	200 x 400	pixel
Material	Die casting aluminum	
Weight	13.5	kg/frame
Brightness	1,000	nits
Processing/Colors	16	bit/trillion
Refresh frame Rate	3840	Hz
Viewing Angle	160°/160°	degrees
Temperaure Range	10° N +40° C	°C
Data Connection	Cat.6	
Power Consumption	Max 600 / Avg 200	W/m <sup>2</sup>
Lifespan of Prduct	50,000 over	hours

# PRODUCT # LED GX-2

최고화질 LED Panel  
전시 / Conference 적합  
Indoor



## SPECIFICATIONS

PARAMETER	VALUE	UNIT
Frame Size	500 x 500 x 76	mm,W x H x D
Pixel Pitch	2.5	mm
Panel Resolution	200 x 200	pixel
Material	Die casting aluminum	
Weight	7.5	kg/frame
Brightness	1,000	nits
Processing/Colors	16	bit/trillion
Refresh frame Rate	3840	Hz
Viewing Angle	160°/160°	degrees
Temperaure Range	10° N +40° C	°C
Data Connection	Cat.6	
Power Consumption	Max 600 / Avg 200	W/m <sup>2</sup>
Lifespan of Prduct	50,000 over	hours



# PRODUCT # LED W-P2

초고화질 LED Panel  
전시 / Conference 적합  
Indoor



## SPECIFICATIONS

PARAMETER	VALUE	UNIT
Frame Size	500 x 500 x 76	mm,W x H x D
Pixel Pitch	2.6	mm
Panel Resolution	192 x 192	pixel
Material	Die casting aluminum	
Weight	7.50	kg/frame
Brightness	1100	nits
Processing/Colors	16 / 281	bit/trillion
Refresh frame Rate	1,920~3840	Hz
Viewing Angle	140°/140°	degrees
Temperaure Range	-20° N +40° C	°C
Data Connection	Cat.6	
Power Consumption	700/350	W/m <sup>2</sup>
Lifespan of Prduct	50,000 over	hours

# PRODUCT # LED P-3

최고화질 LED Panel  
전시 / Conference 적합  
Indoor



SPECIFICATIONS		
PARAMETER	VALUE	UNIT
Frame Size	500 x 500 x 106	mm,W x H x D
Pixel Pitch	3.9	mm
Panel Resolution	128 x 128	pixel
Material	Die casting aluminum	
Weight	9	kg/frame
Brightness	1,300	nits
Processing/Colors	16 / 281	bit/trillion
Refresh frame Rate	1,000~3840	Hz
Viewing Angle	140°/140°	degrees
Temperaure Range	10° N +45° C	°C
Data Connection	Cat.6	
Power Consumption	Max 800 / Avg 400	W/m <sup>2</sup>
Lifespan of Prduct	50,000 over	hours

# PRODUCT # LED LS-4

고화질 LED Panel  
전시 / Conference / Event 적합  
Indoor



## SPECIFICATIONS

PARAMETER	VALUE	UNIT
Frame Size	500 x 1.000 x 75	mm,W x H x D
Pixel Pitch	4.8	mm
Panel Resolution	104 x 208	pixel
Material	Die casting aluminum	
Weight	11.50	kg/frame
Brightness	1100	nits
Processing/Colors	16 / 281	bit/trillion
Refresh frame Rate	1,920~3840	Hz
Viewing Angle	160°/120°	degrees
Temperaure Range	-20° N +45° C	°C
Data Connection	Cat.6	
Power Consumption	Max 650 / Avg 325	W/m <sup>2</sup>
Lifespan of Prduct	50,000 over	hours

# PRODUCT # LED LM-4

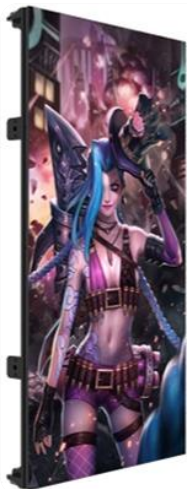
고화질 LED Panel  
전시 / Conference / Event 적합  
Indoor / LS-4와 혼용사용



## SPECIFICATIONS

PARAMETER	VALUE	UNIT
Frame Size	500 x 500 x 75	mm,W x H x D
Pixel Pitch	4.8	mm
Panel Resolution	104 x 104	pixel
Material	Die casting aluminum	
Weight	8	kg/frame
Brightness	1100	nits
Processing/Colors	16 / 281	bit/trillion
Refresh frame Rate	1,920~3840	Hz
Viewing Angle	160°/120°	degrees
Temperaure Range	-20° N +45° C	°C
Data Connection	Cat.6	
Power Consumption	Max 650 / Avg 325	W/m <sup>2</sup>
Lifespan of Prduct	50,000 over	hours

고화질 LED Panel / Curved Panel  
전시 / Conference 적합  
Indoor / Outdoor



## SPECIFICATIONS

PARAMETER	VALUE	UNIT
Frame Size	1000X500X75	mm,W x H x D
Pixel Pitch	4.8	mm
Panel Resolution	104 x 208	pixel
Material	Die casting aluminum	
Weight	12.5	kg/frame
Brightness	5,000	nits
Processing/Colors	16 / 281	bit/trillion
Refresh frame Rate	1,920~3840	Hz
Viewing Angle	140°/120°	degrees
Temperaure Range	-20° N +45° C	°C
Data Connection	Cat.6	
Power Consumption	Max 700 / Avg 350	W/m <sup>2</sup>
Lifespan of Prduct	50,000 over	hours

고화질 LED Panel / Curved Panel  
전시 / Conference 적합  
Indoor / Outdoor / LS II -4와 혼용사용

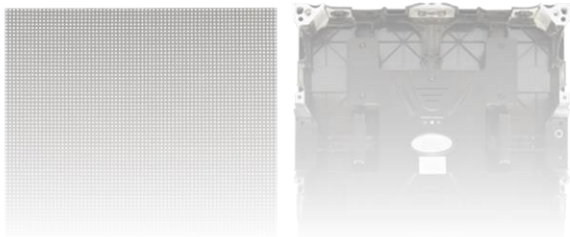
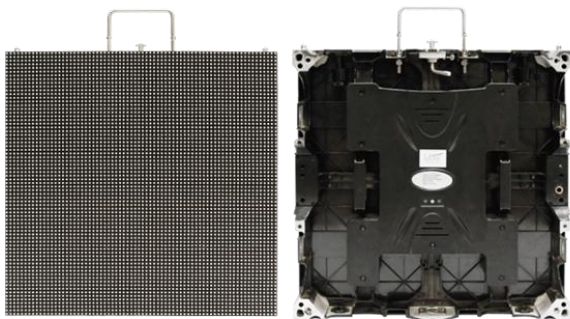


## SPECIFICATIONS

PARAMETER	VALUE	UNIT
Frame Size	500X500X75	mm,W x H x D
Pixel Pitch	4.8	mm
Panel Resolution	104 x 104	pixel
Material	Die casting aluminum	
Weight	8.5	kg/frame
Brightness	5,000	nits
Processing/Colors	16 / 281	bit/trillion
Refresh frame Rate	1,920~3840	Hz
Viewing Angle	140°/120°	degrees
Temperaure Range	-20° N +45° C	°C
Data Connection	Cat.6	
Power Consumption	Max 700 / Avg 350	W/m <sup>2</sup>
Lifespan of Prduct	50,000 over	hours

# PRODUCT # LED P-6

대형 화면 구성에 유리한 Model  
공연 / 이벤트 프로모션 적합  
Indoor / Outdoor / Floor

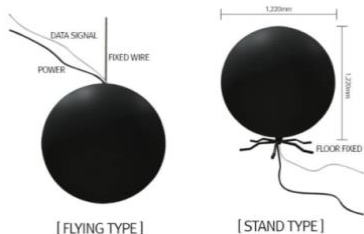


## SPECIFICATIONS

PARAMETER	VALUE	UNIT
Frame Size	500 x 500 x 76	mm,W x H x D
Pixel Pitch	6.9	mm
Panel Resolution	72 x 72	pixel
Material	Die casting aluminum	
Weight	9.5	kg/frame
Brightness	5,500	nits
Processing/Colors	16 / 281	bit/trillion
Refresh frame Rate	1,000~3840	Hz
Viewing Angle	140°/140°	degrees
Temperaure Range	10° N +45° C	°C
Data Connection	Cat.6	
Power Consumption	Max 750 / Avg 350	W/m <sup>2</sup>
Lifespan of Prduct	Over50,000	hours

# PRODUCT # LED LB1200

360도 구 LED  
Creative 한 연출에 효과적 Model  
공연 / 이벤트 프로모션 적합  
Indoor



## SPECIFICATIONS

PARAMETER	VALUE	UNIT
Frame Size	1,200	mm, Φ
Pixel Pitch	4.8	mm
Panel Resolution	43,264	pixel
Material	Die casting aluminum	
Weight	85	kg/frame
Brightness	1,500	nits
Processing/Colors	16 / 281	bit/trillion
Refresh frame Rate	1,000~3840	Hz
Viewing Angle	140°/140°	degrees
Temperaure Range	10° N +45° C	°C
Data Connection	Cat.6	
Power Consumption	Max 2,000 / Avg 1,000	W/m <sup>2</sup>
Lifespan of Prduct	50,000 over	hours



# PRODUCT # PROJECTOR BOXER 4K30

High Resolution (4,096 x 2,160 pixel)  
30K Ansi DLP Projector  
4K Input



## SPECIFICATIONS

PARAMETER	VALUE
Manufacture/Technology	Christie / 3-chip DLP
Resolution	4,096 x 2,160 UHD
Brightness	30,000 ANSI lumens
Contrast	2000:1 full field   650:1 ANSI
Illumination	450W x 6set NSH lamp module
Lamp Life	1,500 hours typical lamp life
Size(WxHxD / mm)	594 x 305 x 934
Weight(kg)	73 (without lens)

20K Ansi Full-HD DLP Projector  
Compact Size



## SPECIFICATIONS

PARAMETER	VALUE
Manufacture/Technology	Christie / 3-chip DLP
Resolution	1920 x 1080 HD
Brightness	20,000 ANSI lumens
Contrast	1600-2000:1 full field   650:1 ANSI
Illumination	3kW Xenon Bubble pre-aligned lamp module
Lamp Life	750 hours typical lamp life
Size(WxHxD / mm)	419x 621 x 815
Weight(kg)	72.5 (without lens)

# PRODUCT # PROJECTOR PT-RZ31K / PT-EX16K

**30K Ansi / Laser / DLP Projector**  
Life time 30,000 hour



## SPECIFICATIONS

PARAMETER	VALUE
Manufacture/Technology	Panasonic / 3-chip DLP
Resolution	1,920 x 1,200 FHD
Brightness	30,000 ANSI lumens
Contrast	20,000:1 full field   650:1 ANSI
Illumination	Laser
Lamp Life	20,000 hours (Normal Mode)
Size(WxHxD / mm)	700 x 418 x 1,250
Weight(kg)	79 (without lens)

**16K Ansi XGA LCD Projector**  
Compact Size



## SPECIFICATIONS

PARAMETER	VALUE
Manufacture/Technology	Panasonic / 3-chip LCD
Resolution	1,024 x 768
Brightness	16,000 ANSI lumens
Contrast	2500:1 full field   650:1 ANSI
Illumination	380W x 4set NSHA lamp module
Lamp Life	2,000 hours typical lamp life
Size(WxHxD / mm)	650 x 349 x 815
Weight(kg)	47 (without lens)

# PRODUCT # VIDEO PROCESSOR

Multi Windows Presentation / Edge Blending / Event Master / 4K Input & Output / Universal input

Barco E2 System



Video Control Console



Christie Spyder 200



# PRODUCT # VIDEO PROCESSOR

Seamless Switcher / Preset / Universal Input / Full-HD / 2K input & Output / Multi Windows

Barco Image Pro-HD



Analogway SmartQuad



Processor Novastar J6



LED 780H



# PRODUCT # Media Server

Main server PC에서 Multi Media System(Video / Audio / Light 등)을 제어하는 System  
다양한 연출 및 특수한 효과 구현가능  
1대의 server로 16대의 Full-HD-Projector 및 LED 제어(4K 최대 4output)  
Network를 통해 여러대의 Server 연결 구성 및 제어  
3D Mapping / S.I(System Integration) Control

disguise (구 d3)



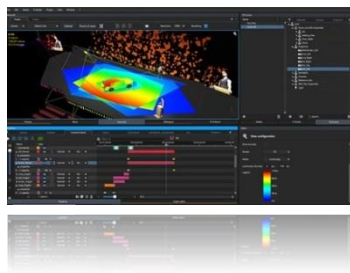
Hippotizer



Catalyst



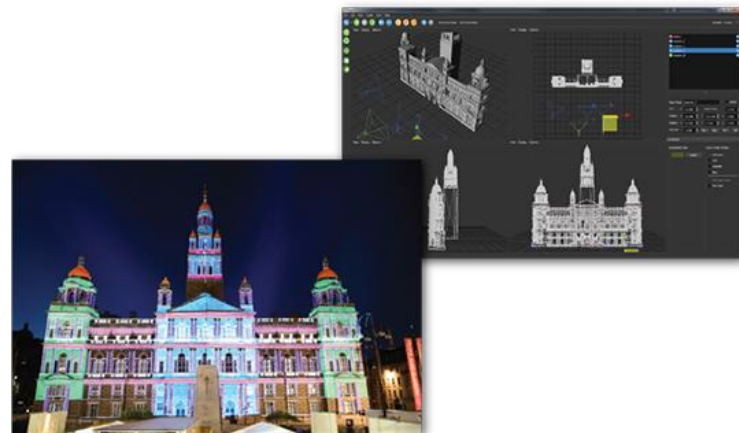
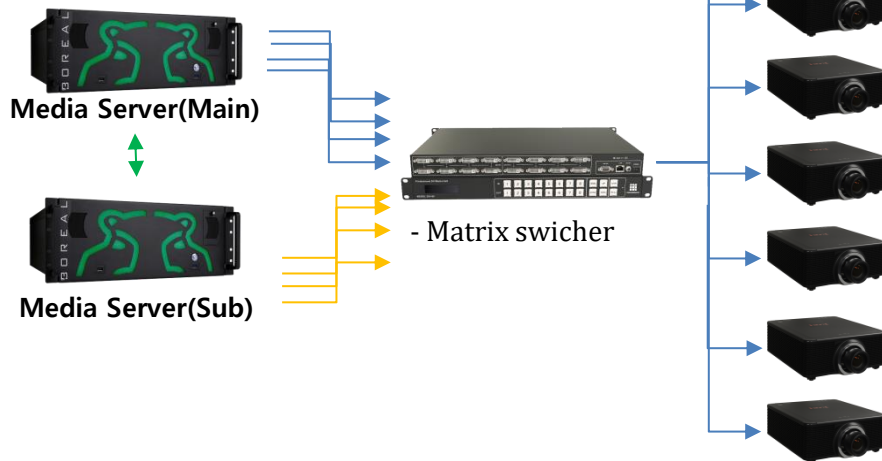
Watchout





구성도 ( EX : Projector를 이용한 3D Mapping 및 Media Façade )

-Backup 구성  
Ethernet 통신으로 주/예비 동시에 운영  
matrix switcher를 통한 주/예비 즉각적인 스위칭



# PORTFOLIO



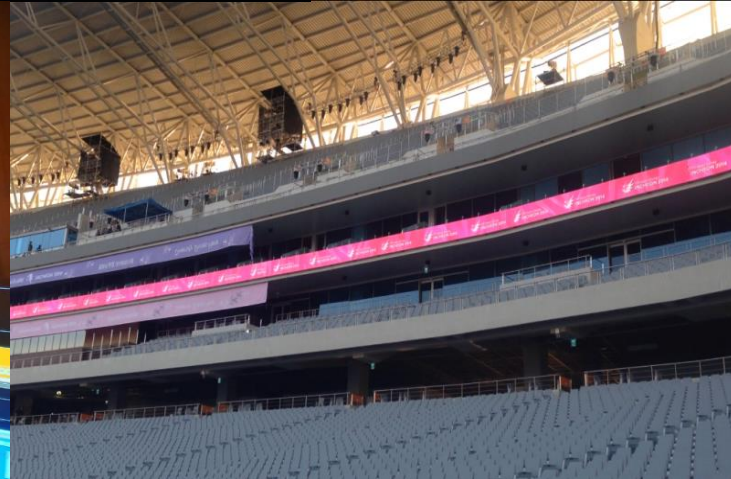
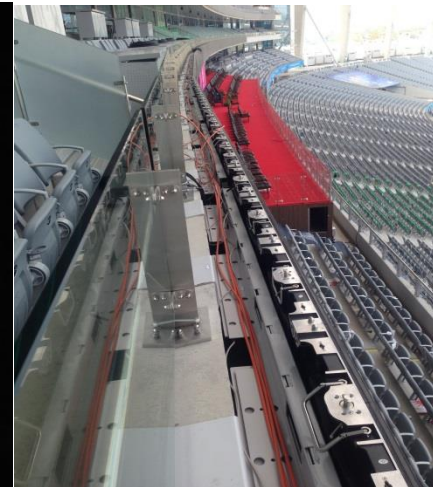


# PORTFOLIO





# PORTFOLIO



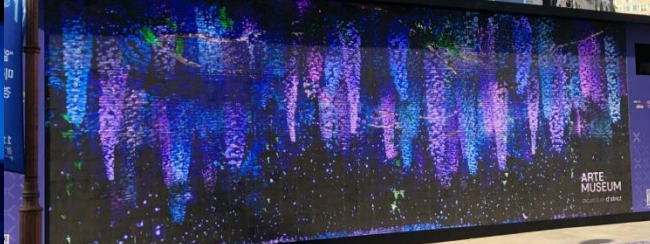


# PORTFOLIO





# PORTFOLIO





# PORTFOLIO





